

**Table (8) TFA, T. Peth.C, recovery time and blood loss comparison between the studied groups**

	<b>Group C (N=23)</b>	<b>Group B (N=23)</b>	<b>Group CL (N=23)</b>	<b>P value</b>
TFA (min.)	26.08±7.5#S	425.65±74.6*	135.36±21.5	0.001
T. Peth.C (mg)	160.5±17.7#S	72.5±6.9*	108.45	0.001
Recovery time (min.)	13.43±1.4#S	8.6±1.23*	10.04±1.55	0.001
Blood loss (ml)	117.34±9.28# S	75.0±8.5*	90.26±5.11	0.001

Data are expressed as mean ± SD TFA: Time of first request of analgesia

T. Peth.C: total pethidine consumption

P# < 0.01 when compared control group C with block group B

PS < 0.05 when compared control group C with clonidine group CL

P\* < 0.05 when compared block group B with clonidine group CL

## x ray fluoroscopic photos from this study work



**figure (1)** Showing the needle in the “inverted vas” under x ray fluoroscopy (lateral view) which is pterygopalatine fossa where sphenopalatine ganglion placed during SPG block.

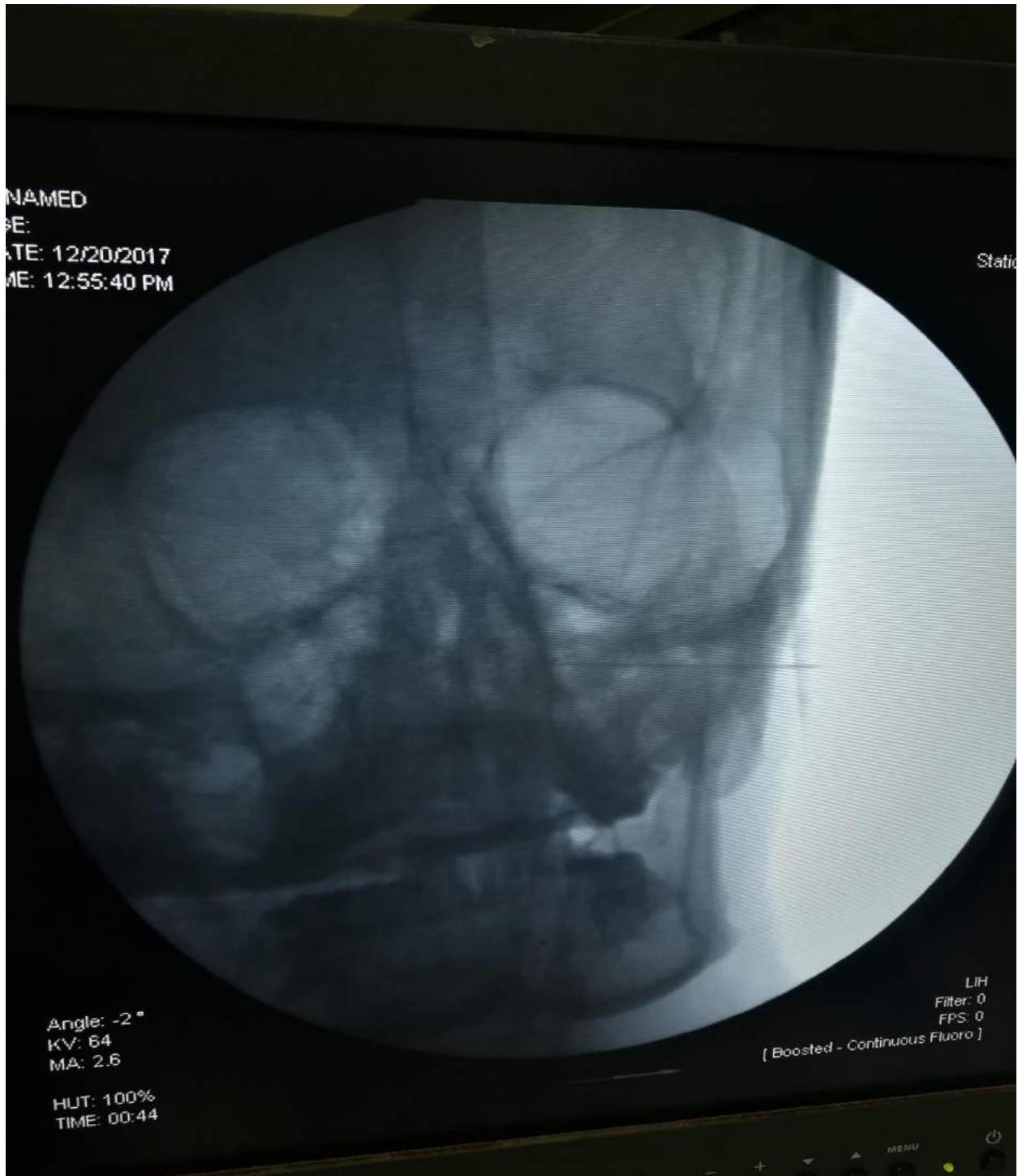


Figure (2) X Ray Skull anterior-posterior view showing Needle tip within the pterygopalatine fossa during SPG block.