



Fig. (s1) : (A) retrograde puncture of ATA. (B) Advancement of the short 0.018 inch wire. (C) Inserting the dilator and removal of wire. (D) Advancement of 0.014 inch wire supported by Pacific deep balloon 3x80 mm

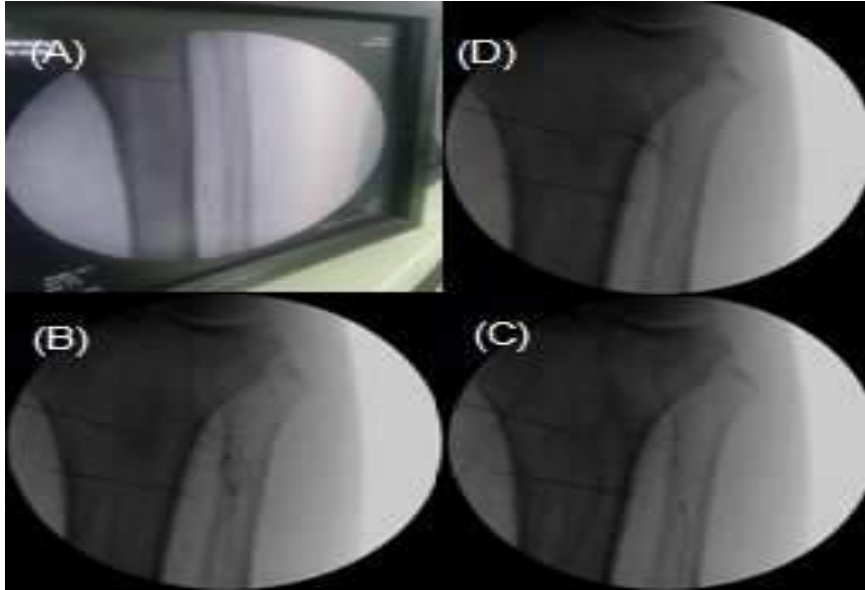


Fig. (s2): (A) Inserting 0.014-inch wire with antegrade balloon in peroneal artery. (B) Advancement of 0.014-inch wire supported by Pacific deep balloon 3×80mm in the anterior tibial artery (ATA) (C) Advancement of 0.014-inch wire supported by Pacific deep balloon 3×80mm till the mouth of ATA. (D)The wire made a loop transversing the origin of ATA

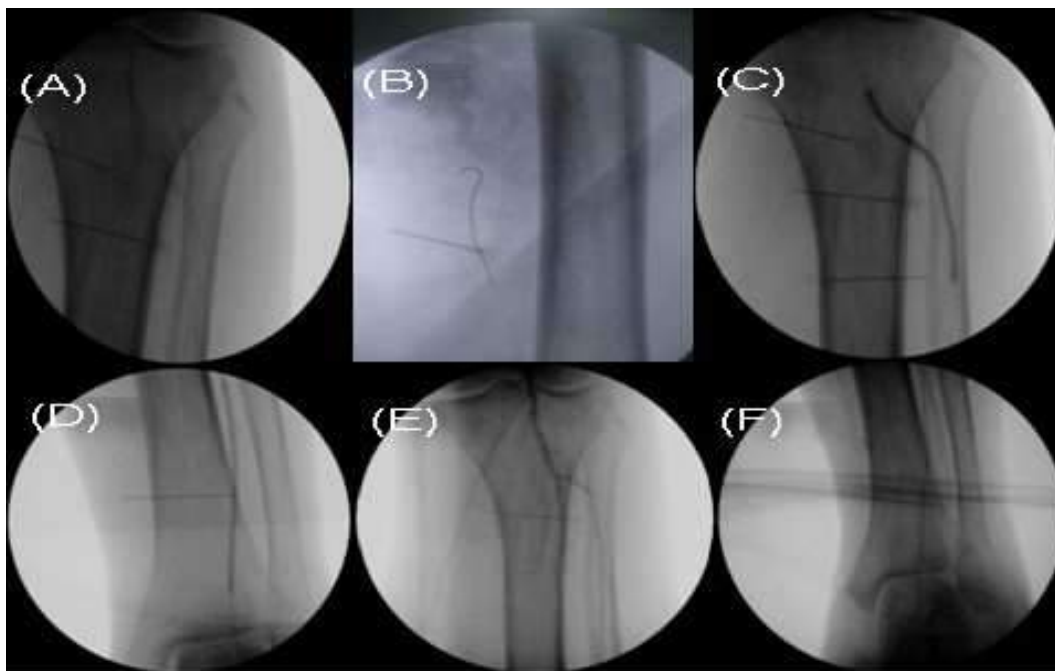


Fig. (s3): (A) inserting with antegrade balloon in peroneal artery. (B) Advancement of 0.014 inch supported by Pacific deep balloon 3x80 mm till SFA. (C) and (D) balloon dilatation of ATA. (E) and (F) completion angiogram from antegrade sheath.