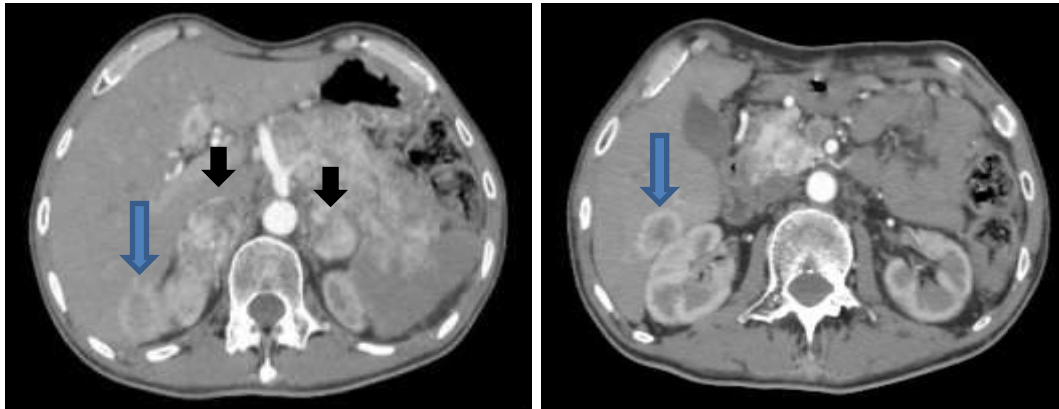


(Multislice Triphasic CT of Abdomen & pelvis with contrast axial and coronal reconstruction for 59 years old patient).



(Coronal reconstruction).



(Figure. S1): Multislice Triphasic CT of Abdomen & pelvis with contrast for a 59yrs old male patient (axial and coronal reconstruction) shows: a diffusely infiltrative pancreatic soft tissue mass, involving tail, body and head of pancreas, with invasion of splenic vein, artery and the hilum of spleen, With abutting of the stomach and related loop as well as abutting the SMV. Heterogeneously enhanced hepatic focal masses (blue arrows). Heterogeneously enhanced bilateral supra renal lesions (Black arrows)... (Unresectable diffuse pancreatic adenocarcinoma)